

Data Export ON-LINE HISTORICAL DATA



- Extraction of raw data
- Retrieving data with sampling
- Retrieving data with sampling and synchronization

Data Export

Data aggregation and export

Data Export is aimed at users who want to visualize and analyze PcVue® data using the familiar features available in the Microsoft Office Suite with Microsoft® Excel®.

PcVue® provides users with data and real-time events. Processing of these data must be reliable, secure and able to calculate key performance indicators. Using the Data Export and without programming, users are able to configure and deploy a solution of analysis based on balance sheets. The features of the Data Export tool combined with Microsoft technologies provide PcVue users with a new powerful solution to build sophisticated data spreadsheets.

Principles

Data Export: Native and feature integrated with PcVue®

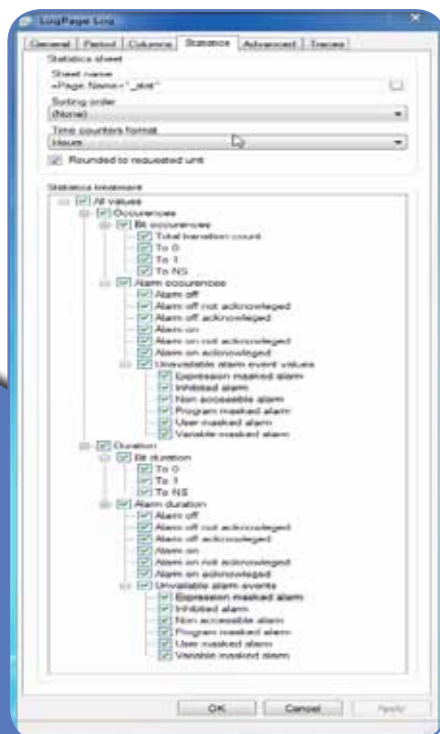
Extract Export data tracked according to criteria defined by the user (dates, event types, properties of the variables...).

Setting up Data export, assessments, and data is directly realized from PcVue®. Sits ergonomics allows global visualization of the different elements that constitute the balance sheets.

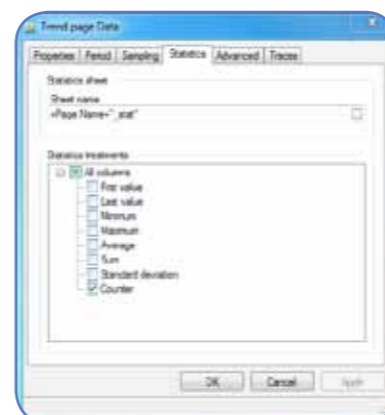
Data Export can automate extraction and export tasks to Excel® from the histories of a set of variables.

Statistics page

Data Export allows to perform statistical calculations on the dataData Export thus calculates different indicators from archived data in the historical owners and/or PcVue® database.



- Number of occurrences of State
- Number of occurrences of alarm
- Duration of State
- Duration alarm
- Sum
- Average
- Minimum
- Maximum
- Standard deviation
- ...



Formatting of statements

Data Export allows different modes of data extraction to balance sheets.

• Extraction of raw data

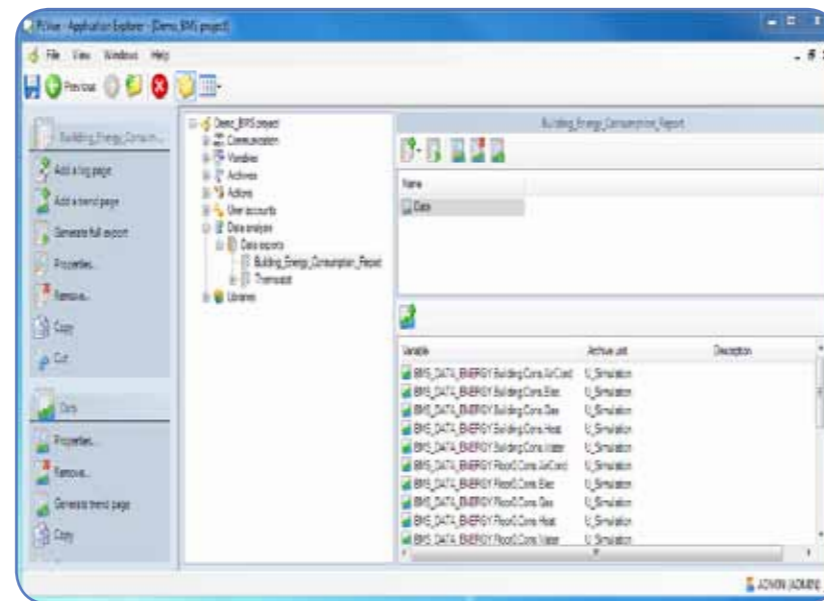
In this mode of operation, Data Export populates the worksheet with values and timestamps stored in storage units. Data Export produces an assessment that the number of samples depends on the number of changes values recorded by PcVue®.

• Retrieving data with sampling

In this mode of operation, Data Export populates the worksheet with values according to the second in several months configurable sampling rate. Thus, the balance sheet will always contain the same number of values for a given period.

• Retrieving data with sampling and synchronization

In this mode of operation, in addition to sampling, Data Export determines when each sample is taken. Synchronization allows to select the values of various data to a specific common stamps.



ADVANTAGES

Data Export extract data tracked according to criteria defined by the user (dates, event types, properties of the variables...).

Balance sheets generated by Data Export are directly exploitable under Excel® without the need to install Excel on the computer.

For custom formatting of balance sheets, workbooks models can be defined. These models will be powered by Data Export during the generation of balance sheets. This approach allows to have full power of Excel® to present the data through different tabs, charts and tables.

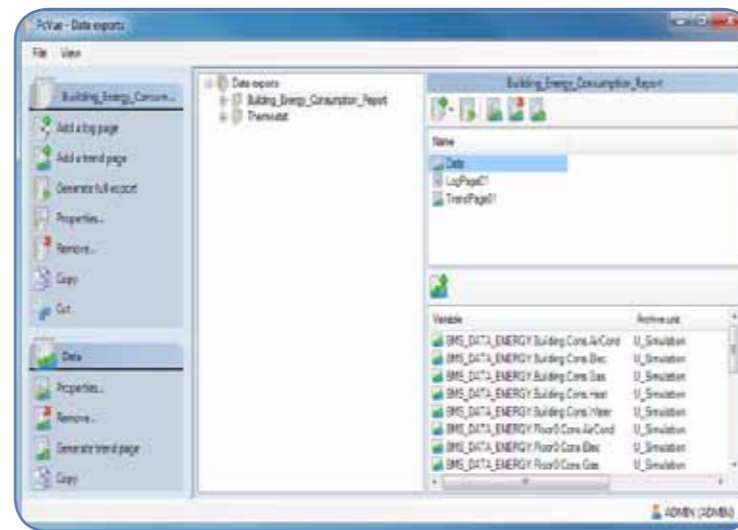
Generation of assessments

Data Export allows the generation mode RunTime, automatically and manual assessments.

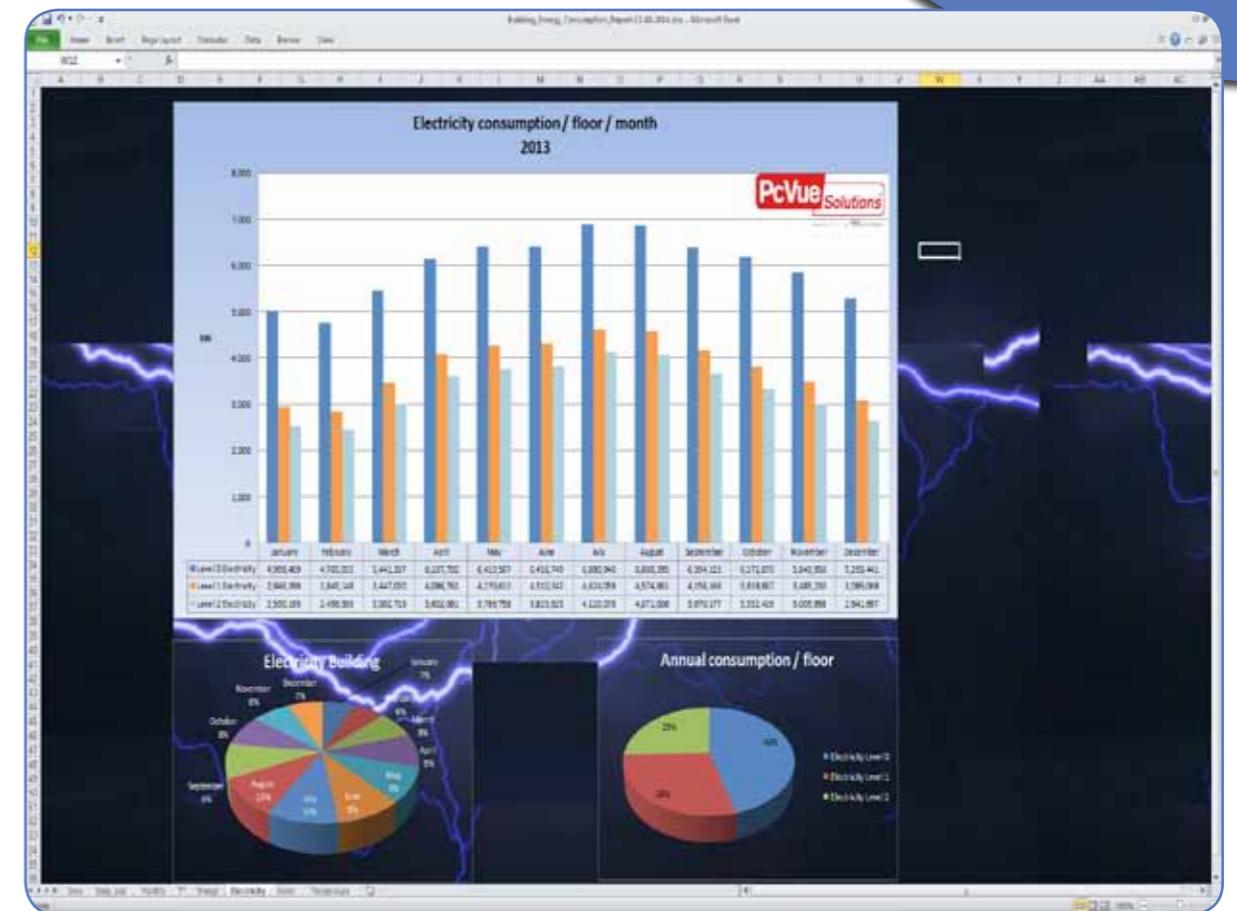
Automatic generation

This generation mode allows to get balance sheets at the onset of an event in oversight (evolution of a State, an alarm, a tendency, planning,...). Generated assessments may use either:

- The default settings for balance sheets
- Specific timestamps start and end
- A reference time and a specific time period

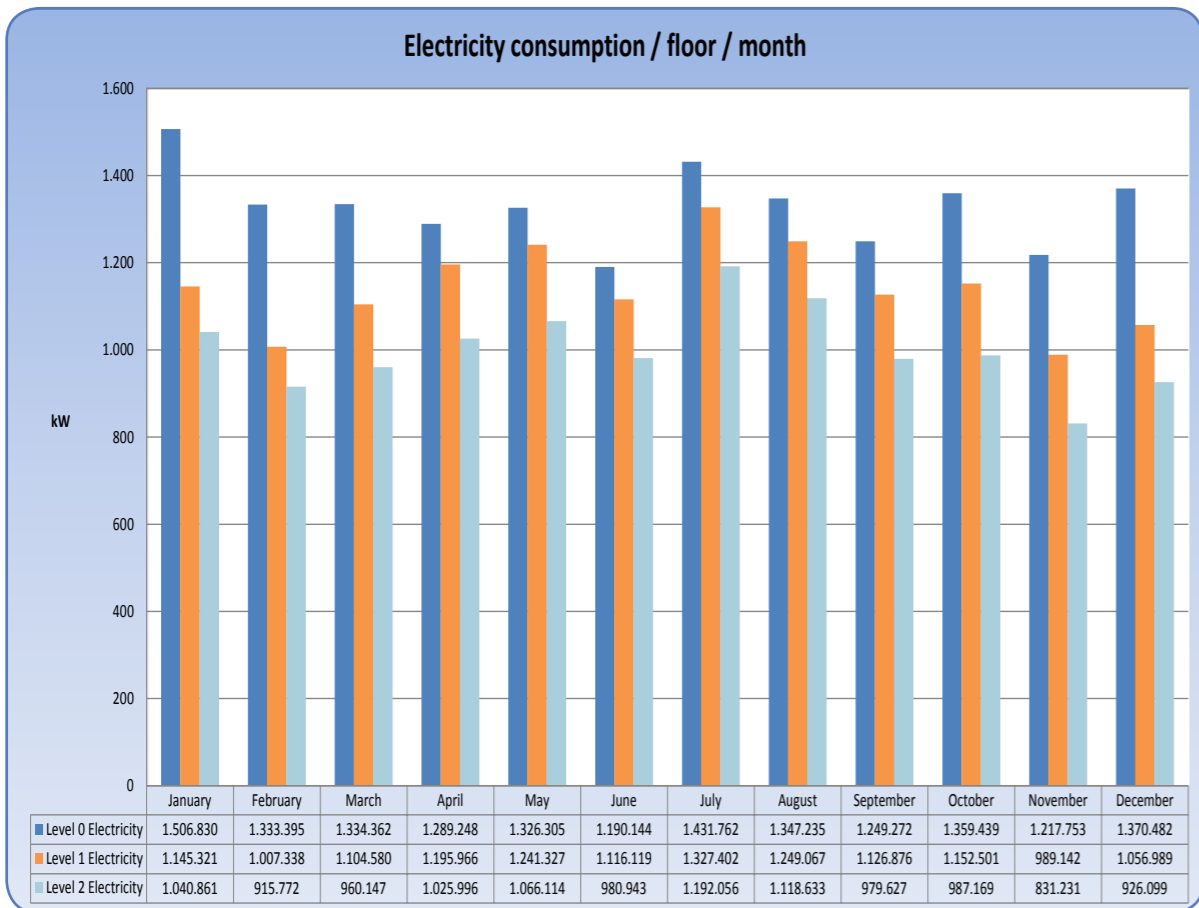


Window of export of database in RunTime mode



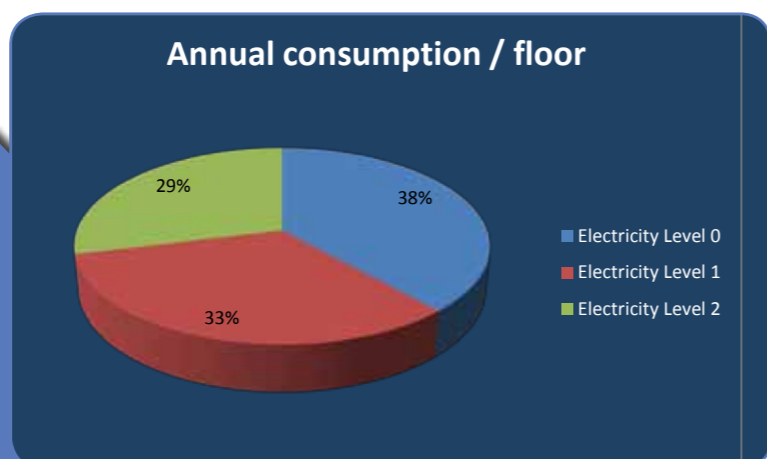
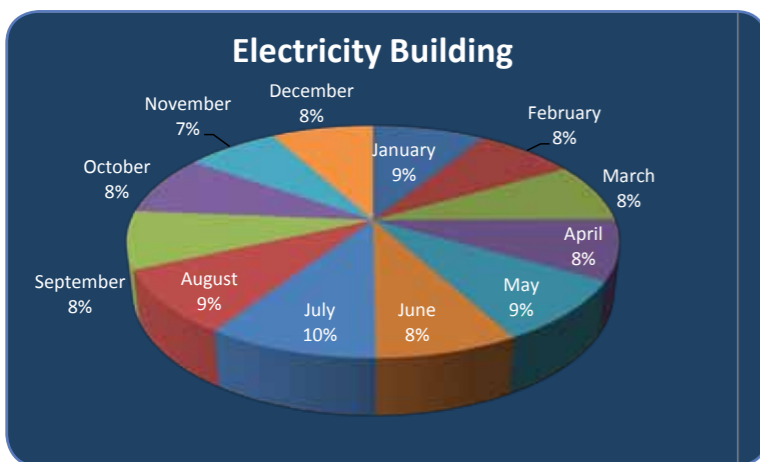
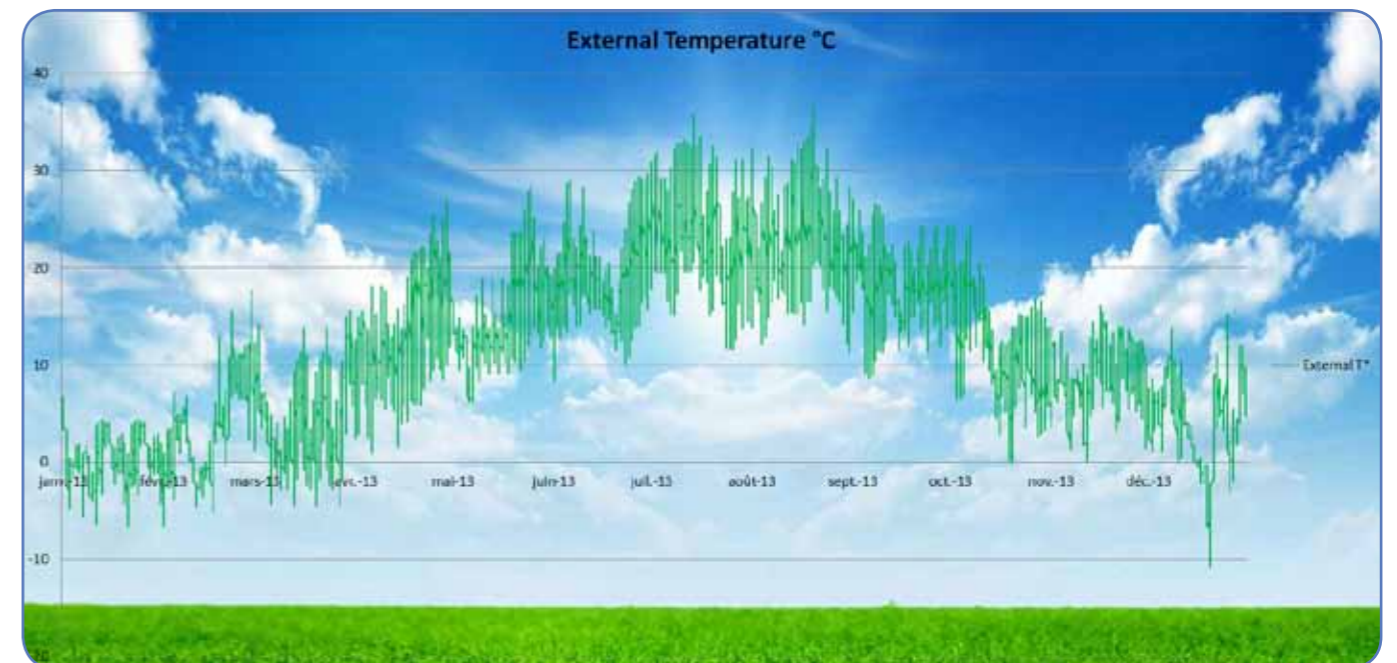
GENERATION OF ASSESSMENTS

Data Export allows the generation mode RunTime, automatically and manual assessments.



Dissemination of the balance sheets

The joint use of Data Export and email sending, native functionality in PcVue®, to automatically distribute the balance sheets generated a list of recipients.



As standards, specifications and designs change from time to time, please ask our technical support for confirmation of the information given as indication in this document. Arc Informatique shall have no liability whatsoever with respect to information contained herein.



Your Independent Global SCADA provider



ARC Informatique
Headquarters and Paris office

2 avenue de la Cristallerie
92310 Sèvres - France

tel + 33 1 41 14 36 00
fax + 33 1 46 23 86 02
hotline: +33 1 41 14 36 25

arcnews@arcinfo.com
www.pcvuesolutions.com

Find your regional contact at:
www.pcvuesolutions.com



ISO 9001 and ISO 14000 certified.

© Copyright 2014. All rights reserved.
All names and trademarks are the property of their
respective owners.

Publication number: EN-15-01-16